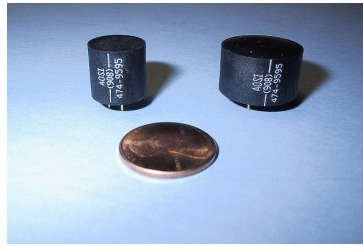


## KuSaBa Engineers Pvt. Ltd.

### DX-008 / DX-045 DUAL AXIS TILT SENSOR



DX-045 and DX-008 dual axis POLYMER based electrolytic tilt sensors provide economical and reliable two axis tilt solutions for applications where very good linearity, high resolution and superior symmetry are required. Rugged construction and wide temperature range make these sensors suitable for numerous automotive, industrial, construction, wheel alignment, laser, medical, virtual reality and robotics applications. Low profile and standard pin spacing facilitate simple PCB utilization. For extended temperature applications XXT model is available. **A special version DX-045-90 can provide a continuous monotonous tilt range of +/-90 arc degrees.**

Specification	DX-008D	DX-045D	Comments/Units
Range	-20 to +20	-70 to +70	arcdeg monotonous max
Range	-8 to +8	-60 to 60	arcdeg linear
Resolution	<3	<22	arcsec typical
Repeatability	<0.03	<0.05	arcdeg typical
Linearity	<1% @ 8°	<7% @ 60°	CCW & CW
Symmetry	<2% @ 4°	<2% @ 35°	CCW & CW
Response time	<20 msec	<20	msec * #
Time constant	<100 msec	<100 msec	msec ** #
Tot. settling time	<300 msec	<300	msec *** #
Temperature	-40 to +60	-40 to +60	deg C operational
Temperature	-40 to +60	-40 to +60	deg C storage
XXT Temp.	-55 to +90	-55 to +90	deg C on XXT models
Construction	shatter proof	shatter proof	Hi Temp Advanced Polymer
Size	0.75"diam x 0.450high	0.5" diam x 0.520 high	nominal

26, Amar Society, Gulmohar Path, Off Law College Road, Erandawane, Pune - 411 004,  
 PHONE: +91 -20 - 25464818, 25433879, 25431293, FAX: +91 - 20 25446759.  
 Email: [info@kusabaengrs.com](mailto:info@kusabaengrs.com), WEB - [www.kusabaengrs.com](http://www.kusabaengrs.com)